

Drawer Front Adjustment Screws



#2 Recex®
SQ/PH Drive



#2 Phillips
Drive



1/2" OD
Washer Head



Type-17 Point

- Recex® Sq/Ph Combo Drive or Phillips Drive
- Type-17 Point
- Zinc Finish

Available Sizes

Phillips -- #8 from 7/8" to 1-1/2"

Recex® -- #8 from 1" to 1-1/2"



PAN AMERICAN
EST. 1957™
SCREW



DEERWOOD

FASTENERS

BENEFITS & FEATURES

- Extra Large 1/2" OD Washer Head for increased bearing surface and maximum hole coverage
- Type-17 cutting flute for less splitting, cracking & bursting.
- Deep Threads offer easy Driving and maximum hold in soft woods and man-made materials.
- Heat-treated steel for high tensile strength and high shear strength

Deerwood.com
1-800-951-2222



A Marmon |
Berkshire Hathaway
Company



Drawer Front Adjustment Screws



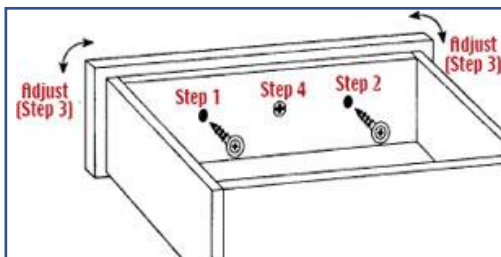
Phillips Drive

Size	Part Number	Thread	Finish	Case QTY	Case #lbs
8 x 7/8	BMXP08078S2Z	Full Thread	Zinc	10,000	54 lbs
8 x 1	BMXP08100S2Z	1/2 Thread	Zinc	7,000	44 lbs
8 x 1	MMXP08100S2Z	1/2 Thread	Zinc	1,000	6 lbs
8 x 1-1/8	BMXP08118S2Z	1/2 Thread	Zinc	6,500	44 lbs
8 x 1-1/8	MMXP08118S2Z	1/2 Thread	Zinc	1,000	7 lbs
8 x 1-1/4	BMXP08114S2Z	1/2 Thread	Zinc	6,500	46 lbs
8 x 1-1/4	MMXP08114S2Z	1/2 Thread	Zinc	1,000	7 lbs
8 x 1-1/2	BMXP08112S2Z	1/2 Thread	Zinc	5,000	40 lbs
8 x 1-1/2	MMXP08112S2Z	1/2 Thread	Zinc	1,000	7 lbs



Recex[®] Drive

Size	Part Number	Thread	Finish	Case QTY	Case #lbs
8 x 1	BMRP08100S2Z	1/2 Thread	Zinc	7,000	43 lbs
8 x 1	MMRP08100S2Z	1/2 Thread	Zinc	1,000	6 lbs
8 x 1-1/8	BMRP08118S2Z	1/2 Thread	Zinc	6,500	42 lbs
8 x 1-1/8	MMRP08118S2Z	1/2 Thread	Zinc	1,000	6 lbs
8 x 1-1/4	BMRP08114S2Z	1/2 Thread	Zinc	6,500	47 lbs
8 x 1-1/4	MMRP08114S2Z	1/2 Thread	Zinc	1,000	7 lbs
8 x 1-1/2	BMRP08112S2Z	1/2 Thread	Zinc	5,000	43 lbs



1. Drill oversize 5/16" hole in the drawer box.
2. Attach drawer front.
3. Adjust drawer front.
4. Affix drawer front with knob or pull screws.



A Marmon |
Berkshire Hathaway
Company

Deerwood.com
1-800-951-2222

