

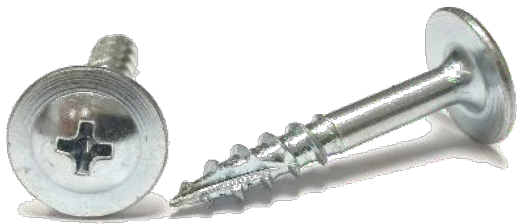
Scan here to visit our website for more product information!



# Drawer Front Adjustment

## Modified Truss Screws

- Extra Large 1/2" OD Washer Head for increased bearing surface and maximum hole coverage
- Type-17 cutting flute for less splitting, cracking & bursting
- Deep Threads offer easy Driving and maximum hold in soft woods and man-made materials.
- Heat-treated steel for high tensile strength and high shear strength



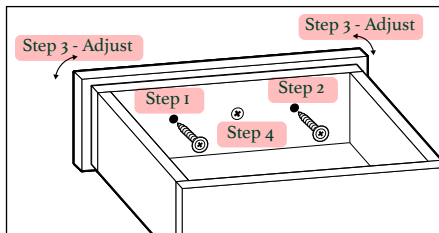
### 1/2" OD Head - Phillips Drive Type 17 Point - 1/2 Thread - Zinc

Size	Bulk	Box QTY	1000 Pack
8 x 7/8	BMXP08078S2Z-8	8,000	--
8 x 1	BMXP08100S2Z-7	7,000	MMXP08100S2Z-4
8 x 1-1/8	BMXP08118S2Z-6.5	6,500	MMXP08118S2Z-4
8 x 1-1/4	BMXP08114S2Z-6.5	6,500	MMXP08114S2Z-4
8 x 1-1/2	BMXP08112S2Z-5	5,000	MMXP08112S2Z-2



### 1/2" OD Head - Recex® (SQ/Phil Combo) Drive Type 17 Point - 1/2 Thread - Zinc

Size	Bulk	Box QTY	1000 Pack
8 x 1	BMRP08100S2Z-7	7,000	MMRP08100S2Z-4
8 x 1-1/8	BMRP08118S2Z-6.5	6,500	MMRP08118S2Z-4
8 x 1-1/4	BMRP08114S2Z-6.5	6,500	MMRP08114S2Z-4
8 x 1-1/2	BMRP08112S2Z-5	5,000	--



1. Drill oversize 5/16" hole in the drawer box.
2. Attach drawer front.
3. Adjust drawer front.
4. Affix drawer front with knob or pull screws.

All test results and recommendations are based on laboratory tests. Specific job site conditions should be taken into consideration when specifying the proper fastener. Actual field values may vary, therefore we assume no liability for use of this information. Pull out values are a measurement of wood material strength.