

Modified Truss

Drawer Front Adjustment



DEERWOOD FASTENERS

Drawer Front Adjustment

Modified Truss Screws

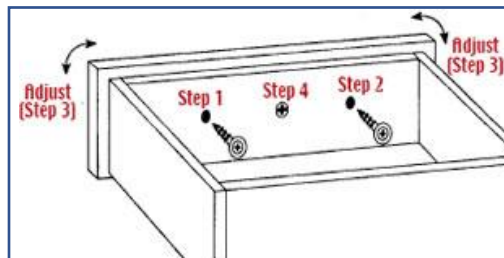
½" OD Head - Phillips Drive
Type 17 Point – ½ Thread – Zinc

Size	Bulk	Box QNTY	1000 Pack
8 x 7/8	BMXP08078S2Z-8	8,000	--
8 x 1	BMXP08100S2Z-7	7,000	MMXP08100S2Z-4
8 x 1-1/8	BMXP08118S2Z-6.5	6,500	MMXP08118S2Z-4
8 x 1-1/4	BMXP08114S2Z-6.5	6,500	MMXP08114S2Z-4
8 x 1-1/2	BMXP08112S2Z-5	5,000	MMXP08112S2Z-2



½" OD Head - Recex® (SQ/Phil Combo) Drive
Type 17 Point – ½ Thread – Zinc

Size	Bulk	Box QNTY	1000 Pack
8 x 1	BMRP08100S2Z-7	7,000	MMRP08100S2Z-4
8 x 1-1/8	BMRP08118S2Z-6.5	6,500	MMRP08118S2Z-4
8 x 1-1/4	BMRP08114S2Z-6.5	6,500	MMRP08114S2Z-4
8 x 1-1/2	BMRP08112S2Z-5	5,000	--



1. Drill oversize 5/16" hole in the drawer box.
2. Attach drawer front.
3. Adjust drawer front.
4. Affix drawer front with knob or pull screws.



A Marmon |
Berkshire Hathaway
Company

Deerwood.com
1-800-951-2222

